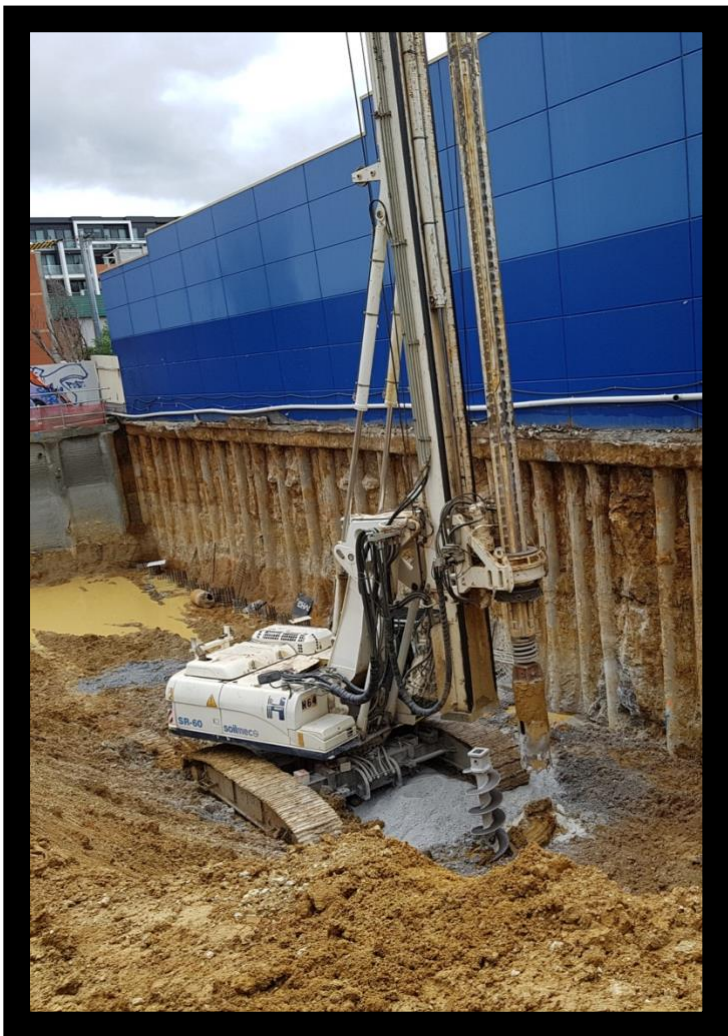


# SOILMEC SR-60

The SR60 piling rig has a 4 stage Kelly bar allowing open bore piling of up to 1800mm diameter to a depth of up to 35m.



<b>Operating Weight</b>	~63 tonne
<b>Width</b>	4450mm (operational) 3000mm (transport configuration)
<b>Height</b>	21530mm (operational) 3325mm (transport configuration)
<b>Length</b>	8100mm (maximum operational) 14480mm (transport configuration)
<b>Auger Sizes</b>	600 – 1800mm
<b>Max. Drilling Depth</b>	35.1m

Alternate solutions and set up also available. Contact us to discuss your requirements

# SOILMEC SR-60

