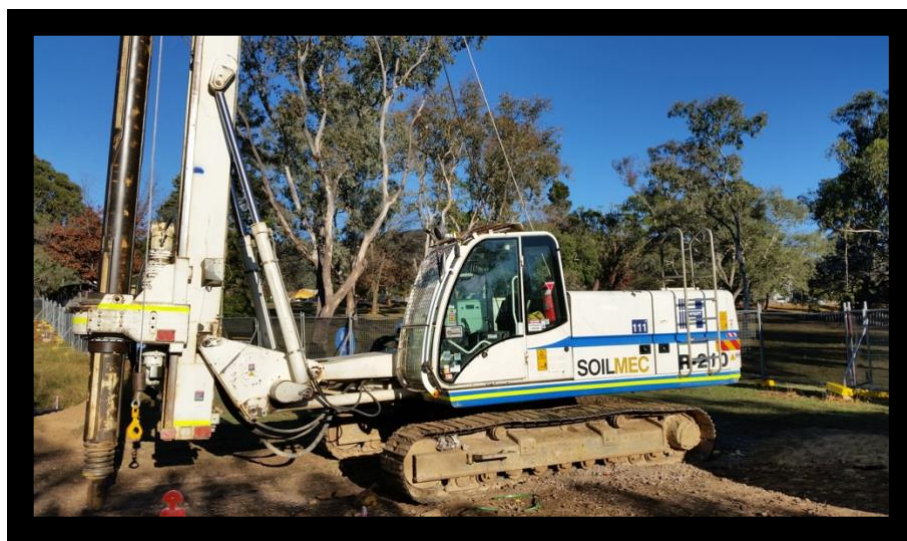


# SOILMEC R-210

The R-210 piling rig has a 4 stage Kelly bar allowing open bore piling of up to 1200mm diameter to a depth of up to 32m. This is a self-erecting piling rig allowing quick and mobile set ups.



<b>Operating Weight</b>	~27 tonne
<b>Width</b>	3400mm (operational) 2550mm (transport configuration)
<b>Height</b>	15058mm (operational) 3083mm (transport configuration)
<b>Length</b>	6900mm (maximum operational) 12431mm (transport configuration)
<b>Auger Sizes</b>	450 – 1200mm
<b>Max. Drilling Depth</b>	32m

Alternate solutions and set up also available. Contact us to discuss your requirements

# SOILMEC R-210

