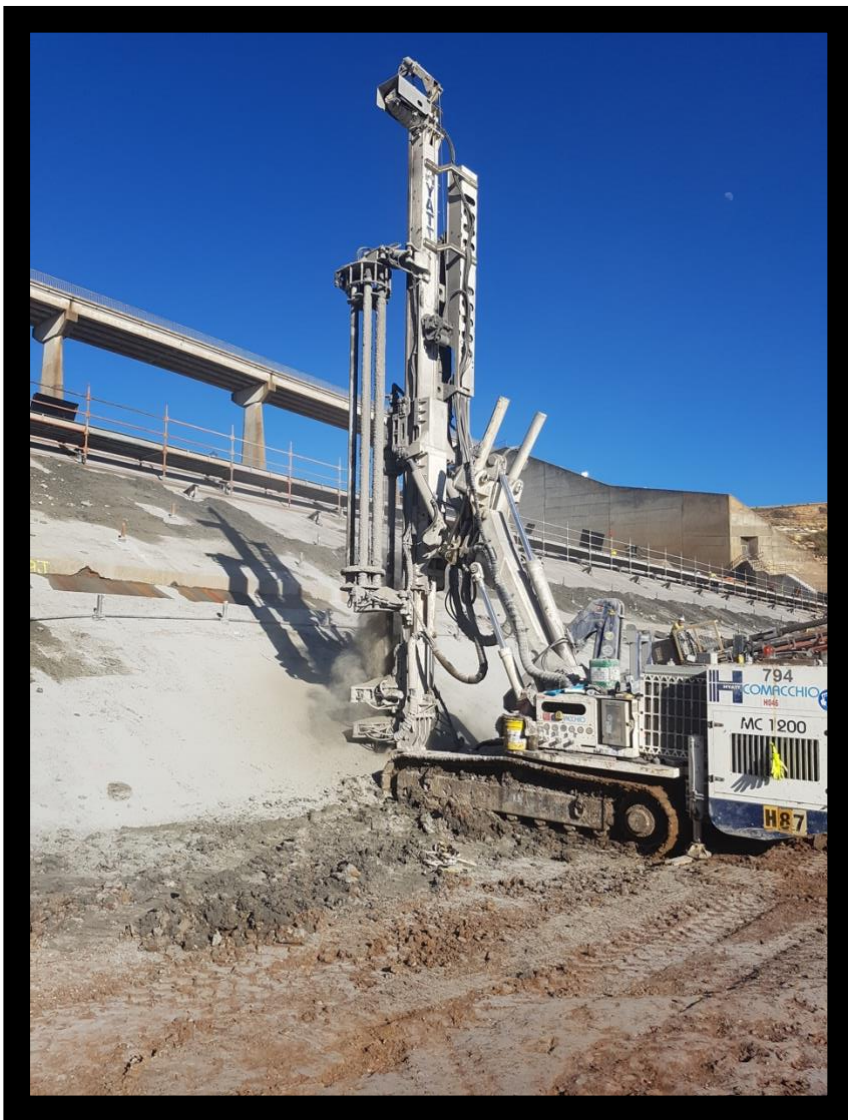


# COMACCHIO MC1200

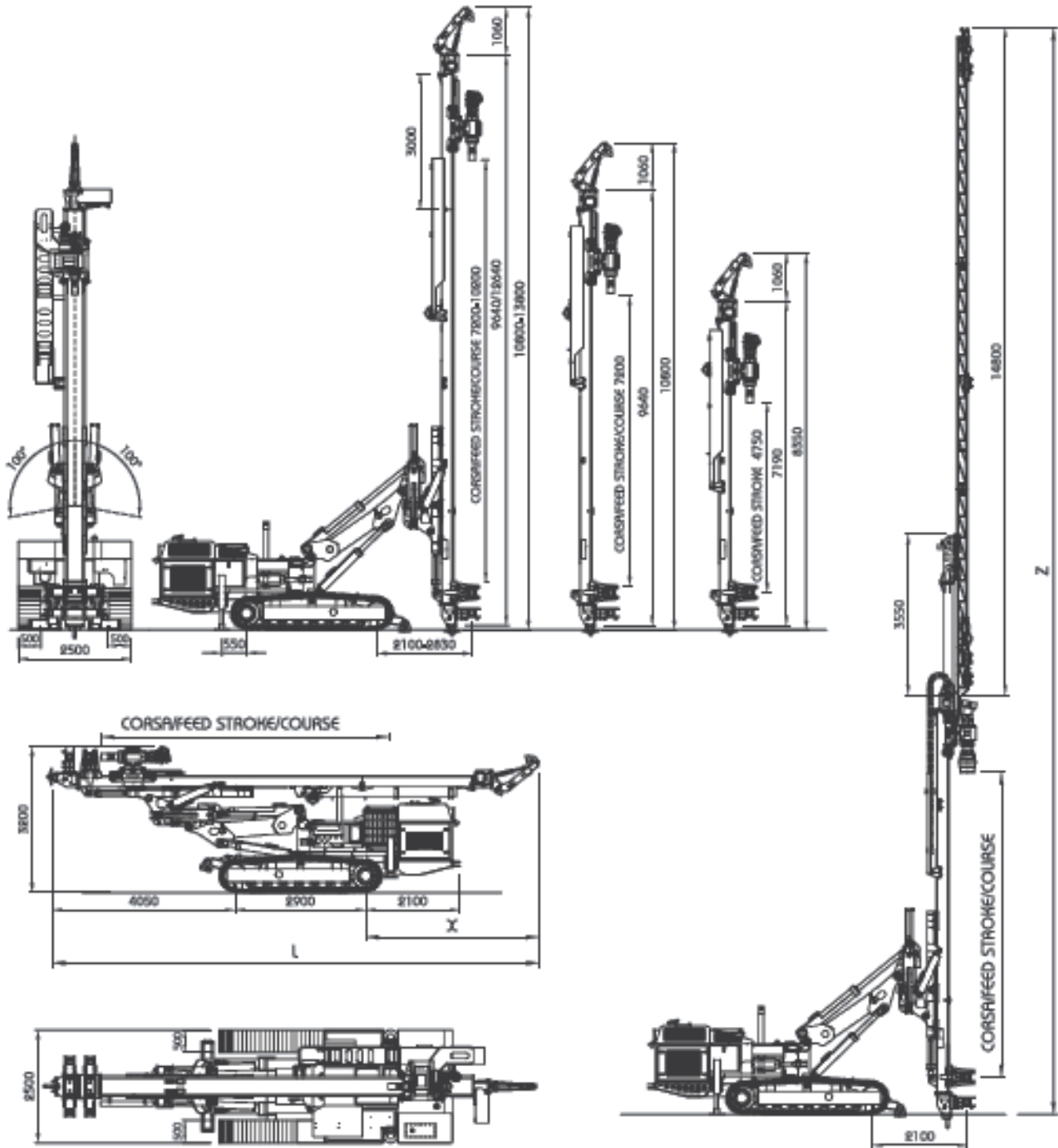
The Comacchio MC1200 is a versatile 24T hydraulic anchoring rig with large ranges of movement. The rig is accompanied by an on-board rod carousel and is capable of drilling micro-piles up to 425mm in diameter as well as jet grouting solutions.



<b>Operating Weight</b>	~24 tonne
<b>Width</b>	2500mm
<b>Height</b>	Variable mast length available
<b>Length</b>	10800mm

Many different mast movements and drilling techniques available. Contact us to discuss your requirements.

# COMACCHIO MC1200



**CONFIGURAZIONE JET GROUTING**  
**JET GROUTING CONFIGURATION**